



| The European Synchrotron

The European Synchrotron

A knowledge hub for industry



Ed Mitchell, Head of Business Development, ESRF
mitchell@esrf.eu www.linkedin.com/in/e-mitchell/

PUBLIC ACCESS

- Results published
- Competitive peer review
- About 30% of work linked with industry

Feasibility access: "have a go"

PROPRIETARY SERVICES

- Confidential & rapid
- >150 clients in 35 countries
- Mail-in services & a la carte

2.6M€
income
in 2023

COLLABORATION & GRANTS

- Industry sponsored staff
- EC Framework Programmes
- InnovaXN PhD programme

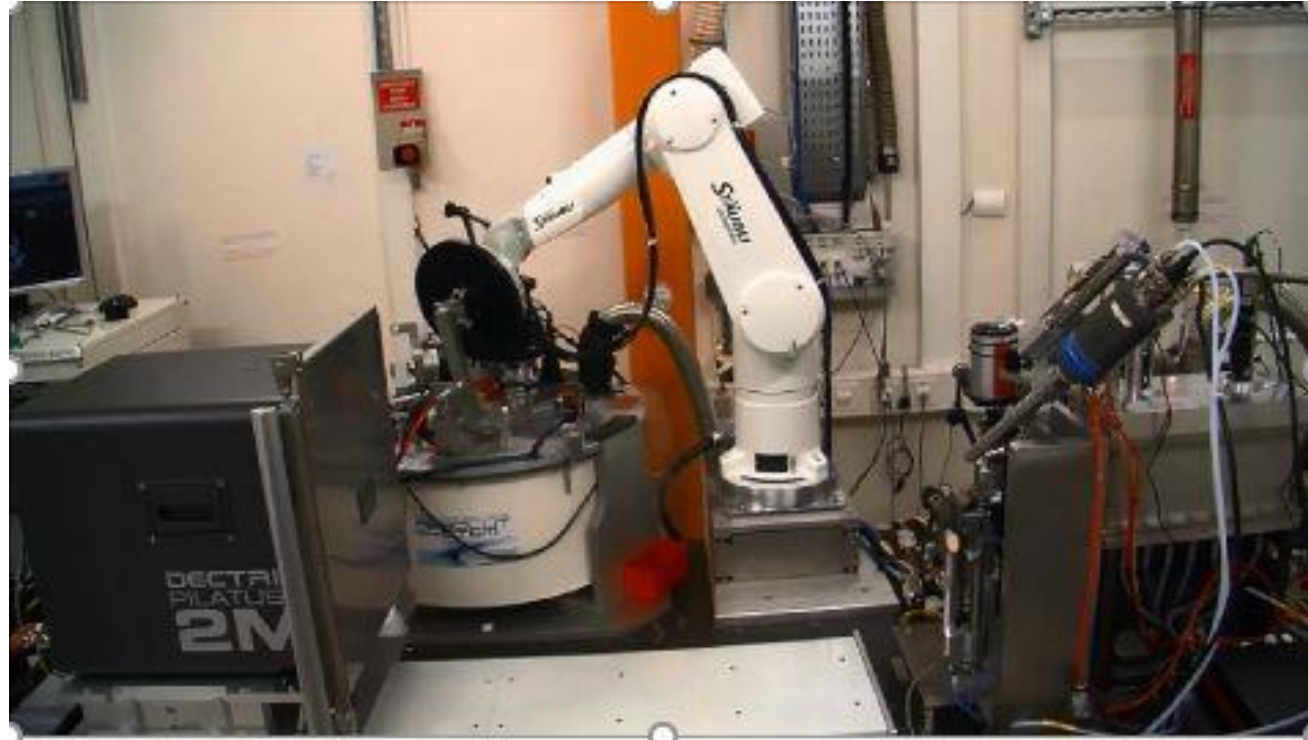
TECH TRANSFER

- Licensed >30 technologies
- In-house manufacturing
- Consultancy



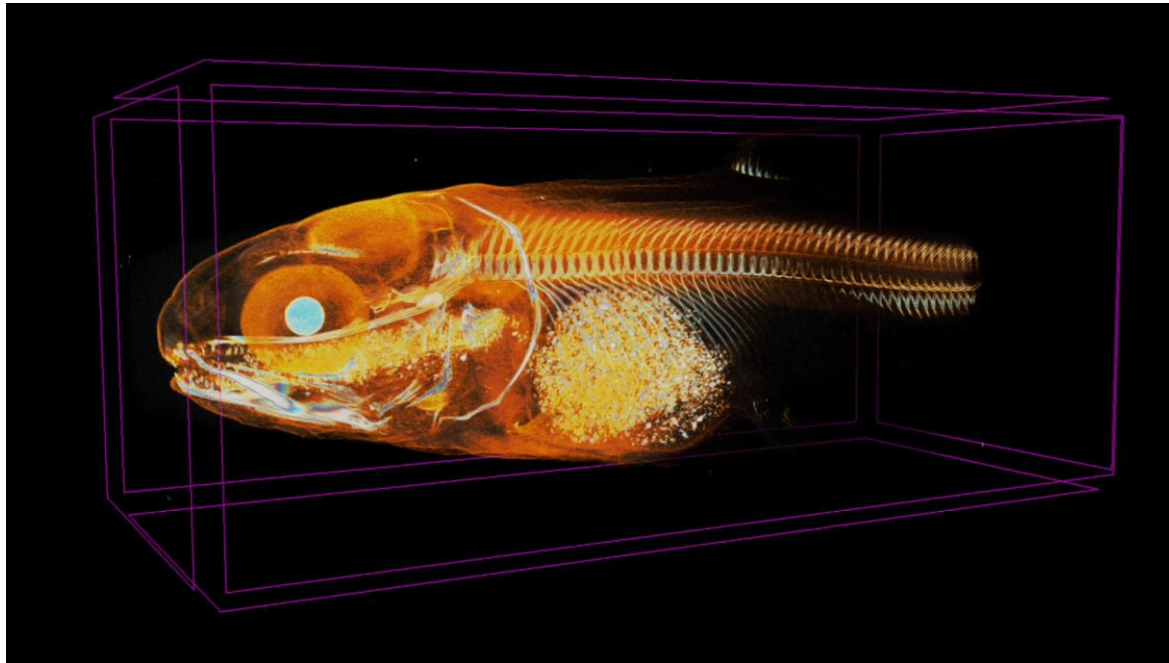
Yes, We're
Open
★ ★ ★ ★ ★

Provide what
industry actually
needs.



AstraZeneca 

X-RAY COMPUTED TOMOGRAPHY- BLINE BM05



Biomar interested in how experimental diets affect fish digestion process, which is why they saw a great potential in non-destructive 3D imaging as a complement to dissection and histological analysis.



TamaTA-Innov: Boosting SME innovation with advanced X-ray analysis

European H2020 project “LEAPS Innov” enabling subsidised & confidential access for SMEs.

Easy and fast applications - Κρατώντας το απλό!

To apply: www.wayforlight.eu/en/industries

Clients using the TamaTA SME support:

- ✓ “We obtained very useful results for **improving the formulation and manufacturing process** of a very innovative product that we are currently introducing in the market.”
- ✓ “We are extremely satisfied with the results and they have given us **new insights into our materials discovery** pipeline.”

SUPPORTING INNOVATIVE SME COMPANIES



29 September 2021



Takis Biotech (It)

- COVID therapy
- ID23-2/micro-MX

4 October 2021

The logo for Scandiflash features the word 'SCANDIFLASH' in a bold, red, sans-serif font, with a white rectangular background behind the letters 'LASH'. To the right of the text are three yellow circles stacked vertically.

Scandiflash (Se)

- Instrumentation
- ID19/MHz radiography

7 October 2021



Hey Planet (Dk)

- Food ingredients
- BM05/micro-CT



ESRF's Mission with industry is growing, and our stakeholders expect more.

We have to look ahead, and continually invent and develop new services for industry, working closely with industry partners and the X-ray beamlines.

The banner features a dark blue background with a top section containing the 'QA' logo and the text 'Towards Quality Assurance to Synchrotron Services'. Below this is a central image of a wooden table with laptops and tablets, overlaid with a white 'INVITATION' button and a dark blue bar with the text '2-3 MARCH 2023 | BERLIN (HZB)'. The bottom section contains logos for LEAPS INNOVATION, ESRF, DESY, and HZB Helmholtz Zentrum Berlin.

Upcoming quality assurance workshop with industry

NEW HIGH THROUGHPUT SERVICES – XRF and XRPD

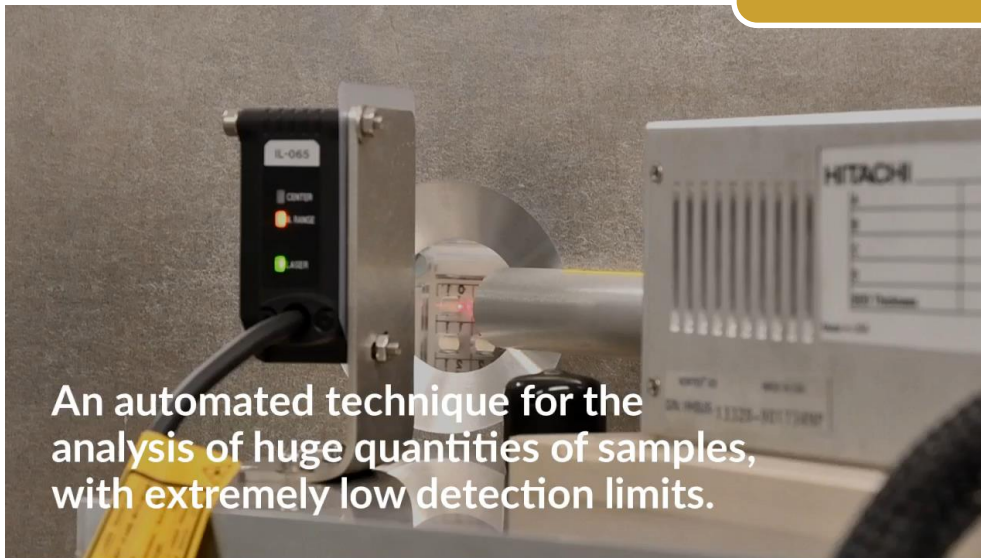
- Enable analysis of thousands of samples
- Accurate component analysis
- Mining industry, materiomics, chemistry, catalysis....

BASF
We create chemistry



High-speed high-throughput X-ray powder diffraction

With Bernd Hindrichsen (BASF)



An automated technique for the analysis of huge quantities of samples, with extremely low detection limits.

With Prof. Manuel Munoz (Montpellier University)



40 PhD projects using ESRF & ILL
40 industry partners driving the research challenges
Next generation ambassadors

www.innovaxn.eu





Extended ESRF
Business Development Office
Team and “Family”



Follow us:
esrf-for-industry



industry@esrf.eu

Thank you for your attention

X-R



Aquafeed.com

SERVING THE INFORMATION NEEDS OF AQUAFEED PROFESSIONALS SINCE 1998

[Subscribe](#) | [Magazine](#) | [Advertise](#) | [Contact Us](#)

[HOME](#) | [NEWSROOM](#) | [COMMODITIES](#) | [PRODUCTS](#) | [RESOURCES](#) | [USEFUL LINKS](#) | [BUYERS' GUIDE](#) | [MAGAZINE](#)

Advertisement

FAMSUN

**Integrated
Solution Provider**



NEWSROOM

[Back to News](#)

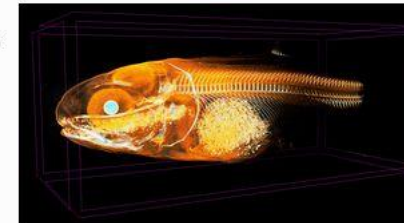
News

Non-destructive 3D imaging expands aquafeed research tools

Thursday, April 21, 2022

The [Danish Technological Institute](#) (DTI), in collaboration with BioMar, investigated batches of fish larvae after being fed different experimental diets. BioMar was interested in how the experimental diets affect the digestion process of fish, and the company found great potential in non-destructive 3D imaging as a complement to dissection and histological analysis.

“Our collaboration with DTI has tremendously aided in expanding our research tools to increase our knowledge of fish physiology. The overarching gain to include this top-of-the-art technology is to continue improving what we offer to the aquaculture industry in form of a feed. In other words, each pellet we produced is based on solid science, and this exciting collaboration provided us with the right tools,” said Pedro Gómez, senior scientist, Biomar Denmark.



Pisciculture

RTO
expertise



...d in how
...ts affect fish
...s, which is why
...potential in
...3D imaging as
...dissection
...analysis.

<https://www.dti.dk/synchrotron-imaging-of-low-density-materials/visualization-of-soft-tissue-in-small-fish-phase-contrast-ct/43911,3>

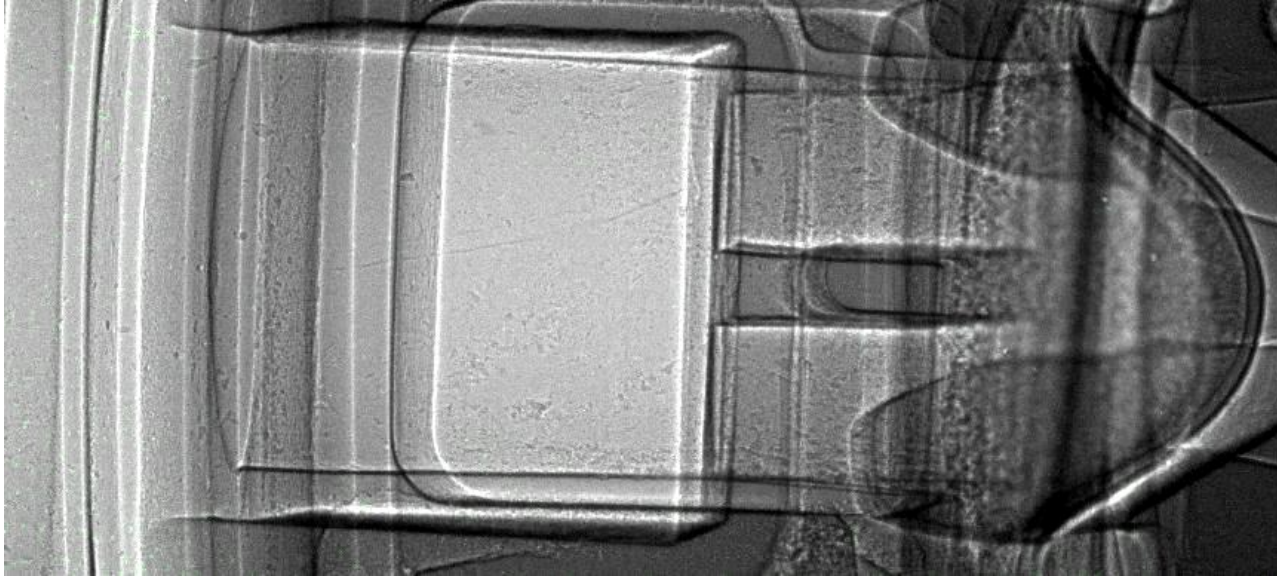
PRECISE FAULT INSERTION – BLINE ID09

Airbus has come to the ESRF to test how well electronic devices used in satellites can sustain cosmic radiation.



Testing electronics
for space
#ESRFforindustry

ULTRA-HIGH SPEED SYNCHROTRON RADIOGRAPHY – BLINE ID19



Watching an inhaler in real time to improve its drug-delivery efficiency.



 **PRIOR**
PLM MEDICAL

*Version including amendments
resulting from the accession of the Netherlands
to the ESRF Convention*

Recognizing that synchrotron radiation will in future be of great significance in many different fields and for industrial applications;

In the hope that other European countries shall participate in the activities which they intend to undertake together under this Convention;

Building on the successful co-operation of European scientists in the framework of the European Science Foundation and the preparatory work carried out under its



Yes, We're

Open

